



# NORTHERN VIRGINIA POTOMAC HERITAGE NATIONAL SCENIC TRAIL:

## Next Steps

January 2022

### RECOMMENDED ACTIONS IN ADDITION TO TRAIL COMPLETION

**Design:** Create spaces with good lighting, sight lines, and amenities.

**Programming:** Work with community organizations to encourage trail use by underserved populations (e.g., activities and programs).

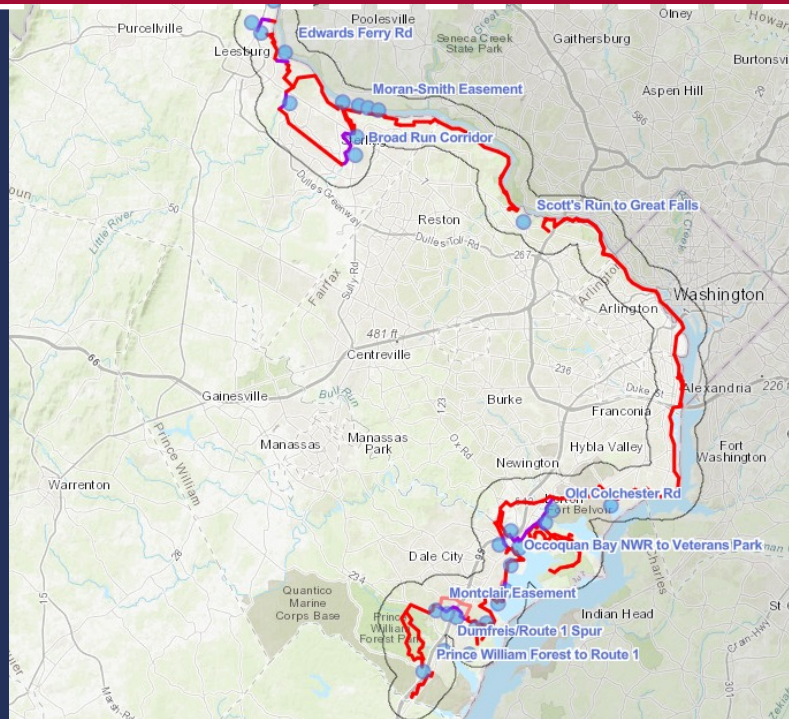
**Communication:** Make the trail welcoming to all users. Provide wayfinding and signage.

**Education:** Help enforcement and local governments understand the unique needs of the community.

**Safety:** Improve pedestrian and bicycle safety along the trail and adjacent networks.

**Data collection:** Bolster Local government efforts to collect pedestrian and bicycle trail usage.

**Outreach:** Ensure broad input from all stakeholders regarding future infrastructure and amenity investments.



### Social Equity Analysis

#### SOCIALLY VULNERABLE COMMUNITIES ALONG PHNST



- Fewer trail access points
- More trail gaps and unplanned route segments
- Higher traffic crashes of pedestrians/cyclists
- Less access to transit

#### MAIN MESSAGE OF COMMUNITY FROM FEEDBACK



- Improve accessibility
- Create more welcoming environment for all users and abilities

